

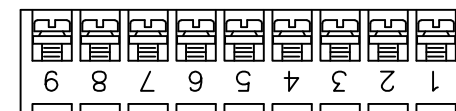
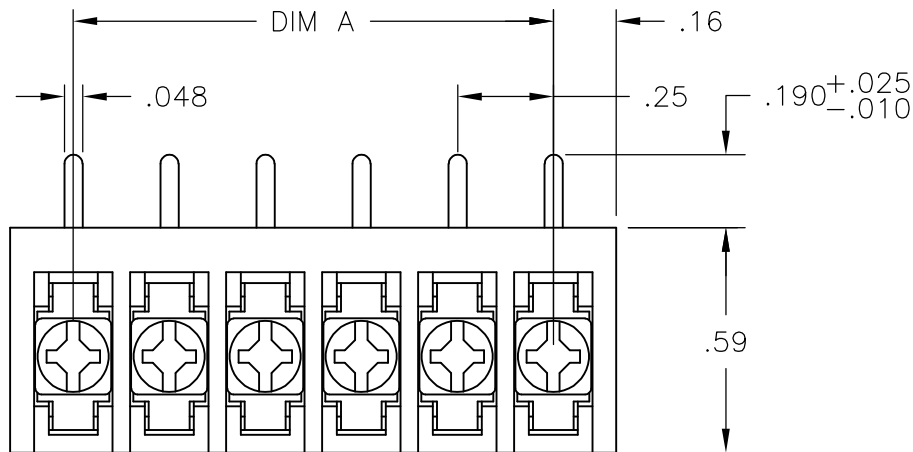
THIS DRAWING IS UNPUBLISHED. QUELLE RECHTSVERHALTEN BEI WEITERGEBUNG GRIPRODOTTO
 RELEASED FOR PUBLICATION. TUTTIL DIRITTI RISERVATI. TUTTOS I DIRITTI RISERVATI. TODOS LOS DERECHOS RESERVADOS. ALL RIGHTS RESERVED. ~~QUESTO DOCUMENTO E' UN DOCUMENTO CONTROLLATO.~~
 COPYRIGHT - By -

| | | | | |
|-----------|------------|---------------------------|---------|--------------|
| LOC FT | DIST 0 | REVISIONS | | |
| P | LTR REV | DESCRIPTION | DATE | DWN APRRO |
| | F | REVISED PER ECO-11-023401 | 01DEC11 | KH MS |

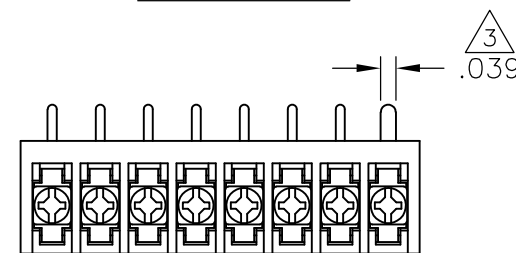
MATERIAL:
 HOUSING: THERMOPLASTIC, UL94V-0, BLACK.
 TERMINAL: BRIGHT TIN PLATED, COPPER ALLOY.
 M3 SCREWS: ZINC PLATED STEEL.
 ELECTRICAL:
 RATED CURRENT: 10A.
 OPERATING VOLTAGE: 300V.
 WIRE RANGE: 16-30 AWG.

MECHANICAL:
 PITCH (TERMINAL SPACING): .250"
 OPERATING TEMP.: 120°C MAX.

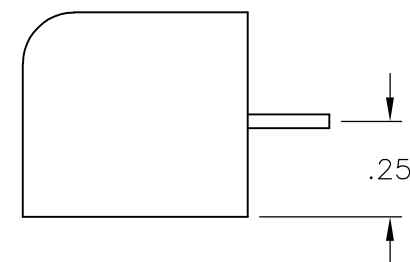
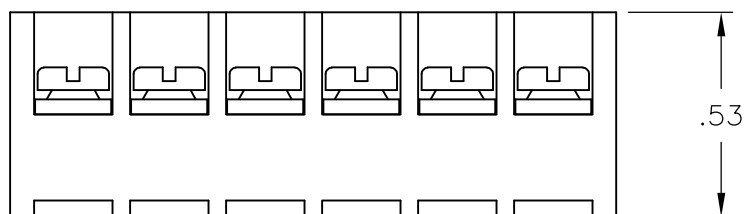
- ① SEE FIGURE.
- ② M3 SCREWS BOTTOMED.
- ③ RECOMMENDED PCB HOLE DIAMETER: .090".
- ④ PRELIMINARY PART NUMBER.
- ⑤ OBSOLETE PARTS: OBSOLETE CIS STREAMLINING PER D.RENAUD/D.SINISI



1-1546119-4



3-1546099-2

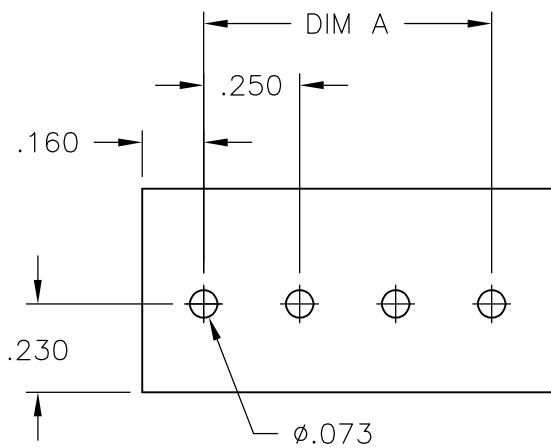


⑤ ① OBSOLETE

④ ①

⑤ ② OBSOLETE

| DIM "A" | NO OF POS | CATALOG NUMBER | TE PART NO. |
|---------|-----------|----------------|-------------|
| 7.25 | 30 | 3PCR-30-006 | 3-1546099-0 |
| 7.00 | 29 | 3PCR-29-006 | 2-1546099-9 |
| 6.75 | 28 | 3PCR-28-006 | 2-1546099-8 |
| 6.50 | 27 | 3PCR-27-006 | 2-1546099-7 |
| 6.25 | 26 | 3PCR-26-006 | 2-1546099-6 |
| 6.00 | 25 | 3PCR-25-006 | 2-1546099-5 |
| 5.75 | 24 | 3PCR-24-006 | 2-1546099-4 |
| 5.50 | 23 | 3PCR-23-006 | 2-1546099-3 |
| 5.25 | 22 | 3PCR-22-006 | 2-1546099-2 |
| 5.00 | 21 | 3PCR-21-006 | 2-1546099-1 |
| 4.75 | 20 | 3PCR-20-006 | 2-1546119-0 |
| 4.50 | 19 | 3PCR-19-006 | 1-1546119-9 |
| 4.25 | 18 | 3PCR-18-006 | 1-1546099-8 |
| 4.00 | 17 | 3PCR-17-006 | 1-1546099-7 |
| 3.75 | 16 | 3PCR-16-006 | 1-1546099-6 |
| 3.50 | 15 | 3PCR-15-006 | 1-1546099-5 |
| 3.25 | 14 | 3PCR-14-006 | 1-1546099-4 |
| 3.00 | 13 | 3PCR-13-006 | 1-1546099-3 |
| 2.75 | 12 | 3PCR-12-006 | 1-1546119-7 |
| 2.50 | 11 | 3PCR-11-006 | 1-1546119-6 |
| 2.25 | 10 | 3PCR-10-006 | 1-1546119-5 |
| 2.00 | 9 | 3PCR-09-256 | 1-1546119-4 |
| 2.00 | 9 | 3PCR-09-006 | 1-1546119-3 |
| 1.75 | 8 | 3PCR-08-310 | 3-1546099-2 |
| 1.75 | 8 | 3PCR-08-006 | 1-1546119-2 |
| 1.50 | 7 | 3PCR-07-006 | 1-1546119-0 |
| 1.25 | 6 | 3PCR-06-302 | 3-1546099-1 |
| 1.25 | 6 | 3PCR-06-006 | 1-1437646-2 |
| 1.00 | 5 | 3PCR-05-006 | 1437646-9 |
| .75 | 4 | 3PCR-04-006 | 1546119-8 |
| .50 | 3 | 3PCR-03-006 | 1546099-1 |
| .25 | 2 | 3PCR-02-006 | 1546119-5 |



RECOMMENDED PCB LAYOUT

| | | | | | |
|--|--|------------------|---------|----------------------|--|
| THIS DRAWING IS A CONTROLLED DOCUMENT. | | DWN/DWG JOE | 4/22/03 | TE Connectivity | |
| TOLERANCES UNLESS OTHERWISE SPECIFIED: | | S. SCHLEGEL | | | |
| DIMENSIONS: INCHES | | CHK/CONTROLLED | 6/18/02 | | |
| TOLERANCES UNLESS OTHERWISE SPECIFIED: | | S. YODER | | | |
| 0 PLC/DWG: ± - | | APVD/APPROVE | 6/18/02 | NAME | |
| 1 PLC/DWG: ± - | | S. YODER | | D. RENAUD | |
| 2 PLC/DWG: ± .02 | | PRODUCT SPEC | | 3PCR-XX-006 ASSEMBLY | |
| 3 PLC/DWG: ± .010 | | APPLICATION SPEC | | | |
| 4 PLC/DWG: ± - | | SCALE | | SIZE | |
| ANGLES/ANGLES ± - | | SCALE | | CAGE CODE | |
| FINISH/OBERFLAECHE/FARBE | | WEIGHT | | DRAWING NO | |
| ACABAMENTO | | ESQ/CH APPROX. | | G-1437646-9 | |
| | | | | RESTRICTED TO | |
| | | | | REVISIONS | |
| | | | | SHEET 1 OF 1 | |
| | | | | REV F | |