

High Frequency Ceramic Solutions

2.45 GHz Antenna

P/N 2450AT43D100

Detail Specification: 11/29/06

Page 1 of 4

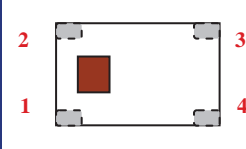
General Specifications

| | |
|---------------------|---------------|
| Part Number | 2450AT43D100 |
| Freq. Range (GHz) | 2400 - 2500 |
| Peak Gain (XZ-V) | -0.5 dBi typ. |
| Average Gain (XZ-V) | -3.6 dBi typ. |
| Return Loss | 9.5 dB min. |

| | |
|-----------------|--------------|
| Input Power | 3W max. |
| Impedance | 50 Ω |
| Operating Temp. | -40 to +85°C |
| Reel Quantity | 1,000 |

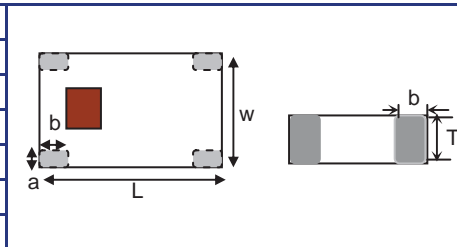
| | | | | |
|-------------------|-----------------|------------|---------------|-----------------------------|
| P/N Suffix | Packaging Style | Bulk | Suffix = S | Eg. 2450AT43D100S |
| | | T & R | Suffix = E | Eg. 2450AT43D100E |
| Termination Style | | 100% Tin | Suffix = None | Eg. 2450AT43D100(E or S) |
| | | Tin / Lead | Suffix = /Pb | Eg. 2450AT43D100(E or S)/Pb |

| Terminal Configuration | |
|------------------------|---------------|
| No. | Function |
| 1 | Feeding Point |
| 2 | GND |
| 3 | GND |
| 4 | GND |



Mechanical Dimensions

| | In | mm |
|---|---------------|-------------|
| L | 0.236 ± 0.008 | 6.00 ± 0.20 |
| W | 0.098 ± 0.008 | 2.50 ± 0.20 |
| T | 0.079 ± 0.008 | 2.00 ± 0.20 |
| a | 0.020 ± 0.008 | 0.50 ± 0.20 |
| b | 0.059 ± 0.008 | 1.50 ± 0.20 |

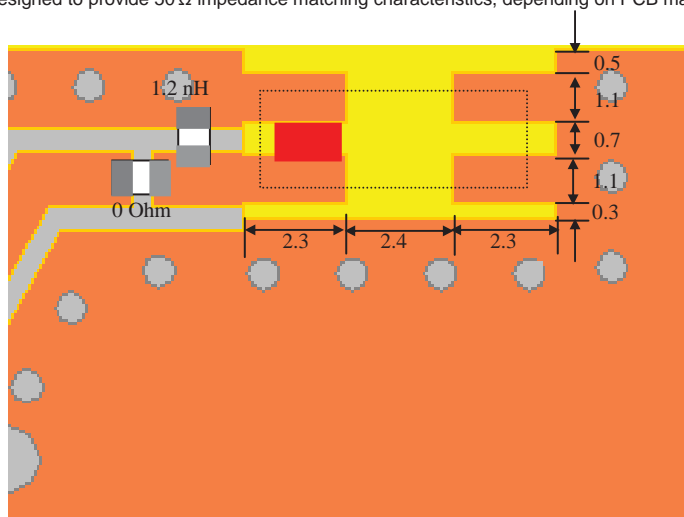


Mounting Considerations

Mount these devices with white mark facing up. Units: mm

* Line width should be designed to provide 50 Ω impedance matching characteristics, depending on PCB material and thickness.

With
Matching
Circuits



Johanson Technology, Inc. reserves the right to make design changes without notice.
All sales are subject to Johanson Technology, Inc. terms and conditions.



www.johansontechnology.com

931 Via Alondra • Camarillo, CA 93012 • TEL 805.389.1166 FAX 805.389.1821

2003 Johanson Technology, Inc. All Rights Reserved

High Frequency Ceramic Solutions

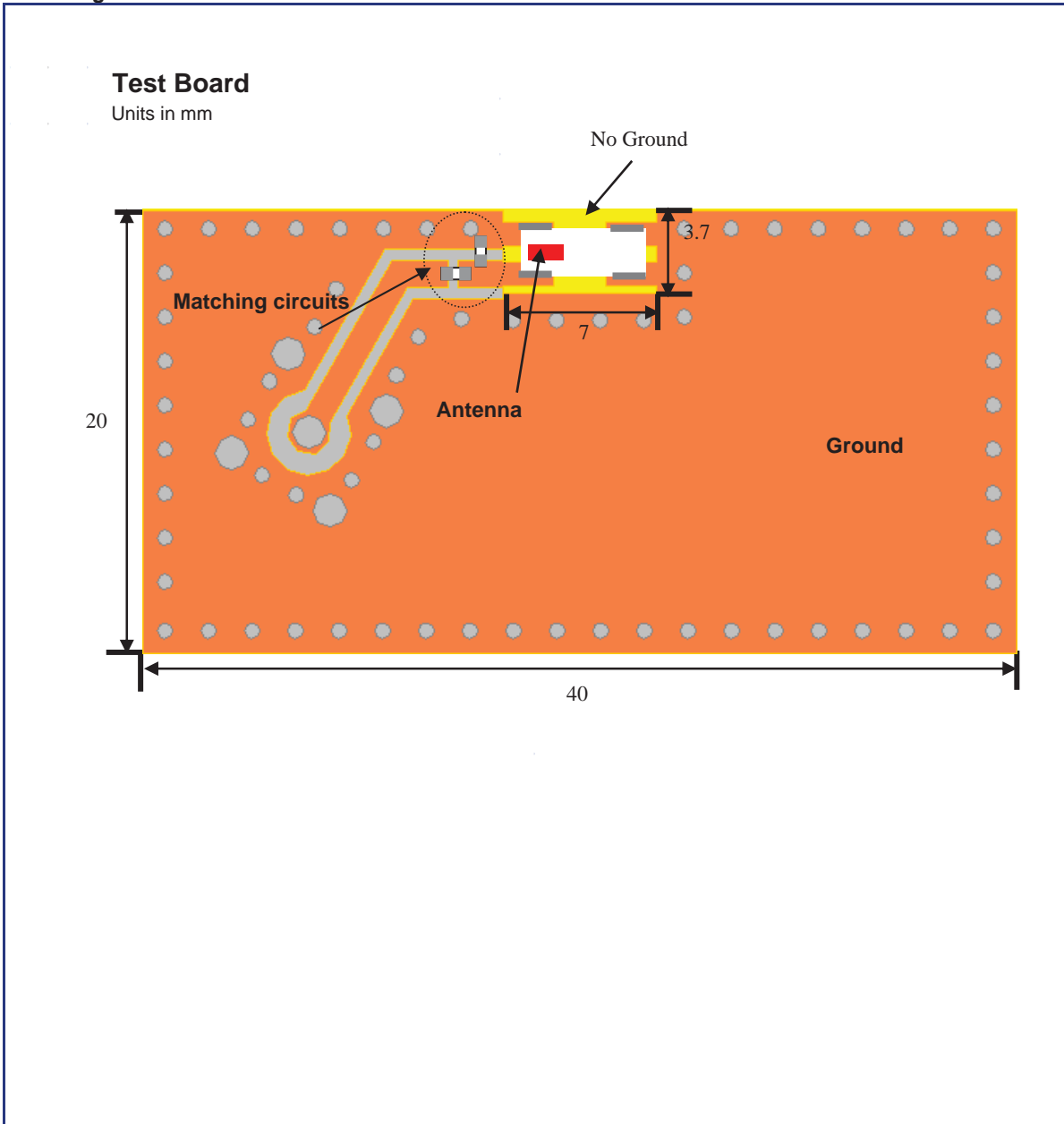
2.45 GHz Antenna

P/N 2450AT43D100

Detail Specification: 11/29/06

Page 2 of 4

Mounting Considerations



Johanson Technology, Inc. reserves the right to make design changes without notice.
All sales are subject to Johanson Technology, Inc. terms and conditions.



www.johansontechnology.com

931 Via Alondra • Camarillo, CA 93012 • TEL 805.389.1166 FAX 805.389.1821

2003 Johanson Technology, Inc. All Rights Reserved

High Frequency Ceramic Solutions

2.45 GHz Antenna

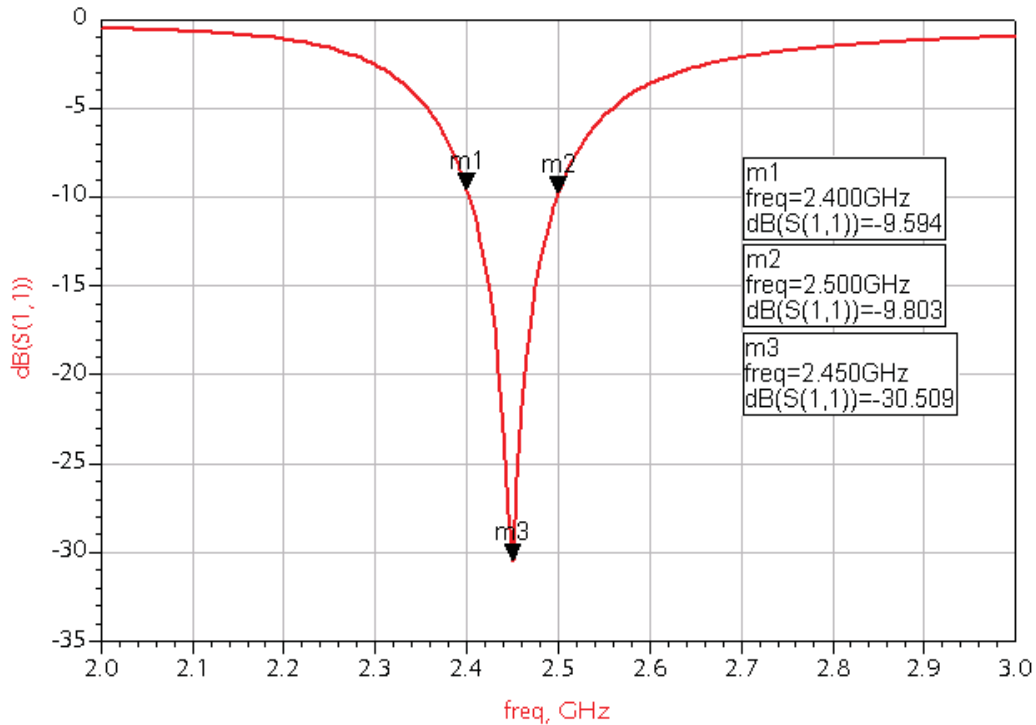
P/N 2450AT43D100

Detail Specification: 11/29/06

Page 3 of 4

Mounting Considerations

Return Loss & Isolation (With Matching Circuits)



Johanson Technology, Inc. reserves the right to make design changes without notice.
All sales are subject to Johanson Technology, Inc. terms and conditions.



www.johansontechnology.com

931 Via Alondra • Camarillo, CA 93012 • TEL 805.389.1166 FAX 805.389.1821

2003 Johanson Technology, Inc. All Rights Reserved

High Frequency Ceramic Solutions

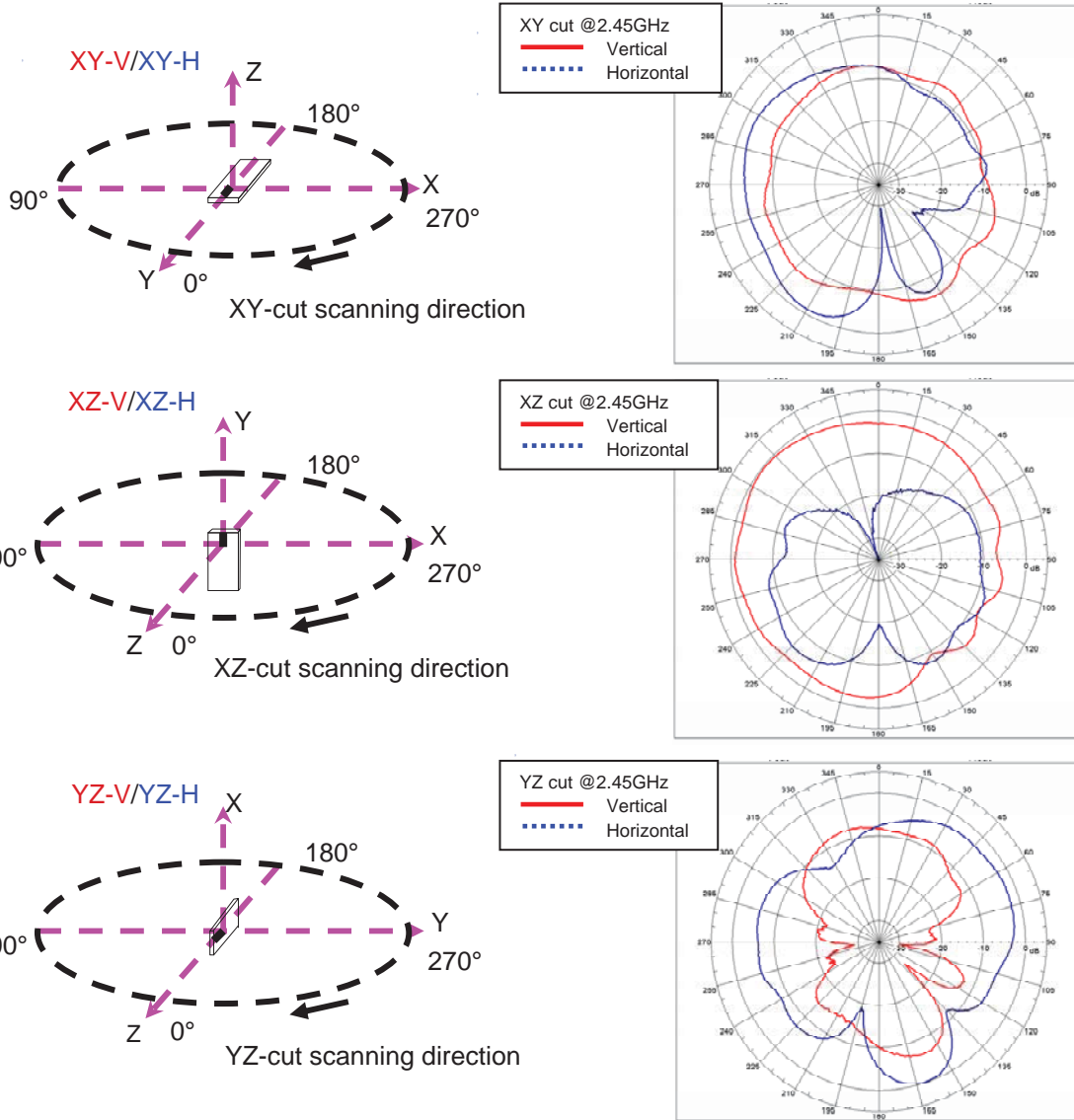
2.45 GHz Antenna

P/N 2450AT43D100

Detail Specification: 11/29/06

Page 4 of 4

Ant1 Radiation Patterns



Johanson Technology, Inc. reserves the right to make design changes without notice.
 All sales are subject to Johanson Technology, Inc. terms and conditions.



www.johansontechnology.com

931 Via Alondra • Camarillo, CA 93012 • TEL 805.389.1166 FAX 805.389.1821

2003 Johanson Technology, Inc. All Rights Reserved