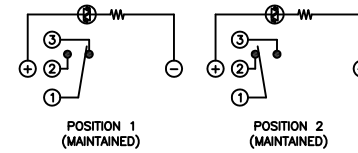


**SCHEMATIC**



**SPECIFICATIONS**

**FUNCTION:**  
1P2T ON-ON

**RATING:**  
2A 48VDC

**ILLUMINATION VOLTAGE:**  
12V 20mA

**CONTACT RESISTANCE:**  
Initial: 50mΩ Max. at 1A 12VDC

**INSULATION RESISTANCE:**  
1,000MΩ Min. at 500VDC

**DIELECTRIC STRENGTH:**  
2,000VAC Min. for 1 Minute

**ELECTRICAL LIFE:**  
50,000 Cycles

**MECHANICAL LIFE:**  
1,000,000 Cycles

**TEMPERATURE:**  
Operating: -20°C to 70°C

**INGRESS PROTECTION:**  
IP65

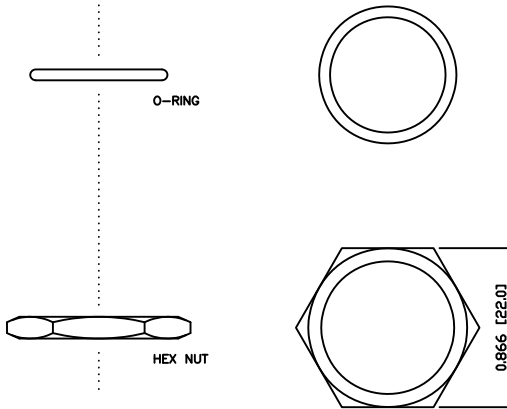
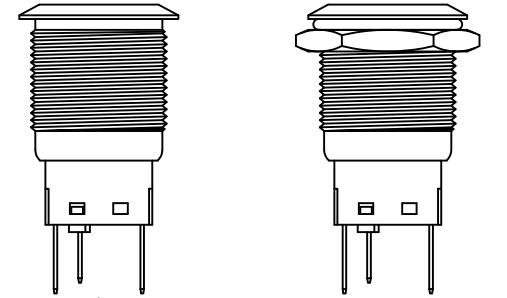
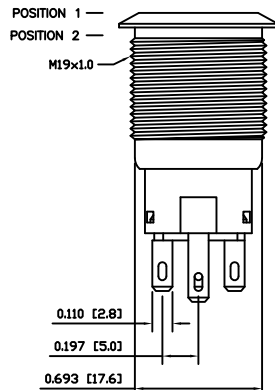
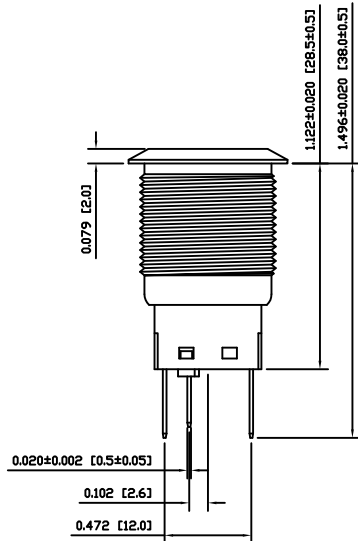
**APPROVALS:**  
**RoHS**  
COMPLIANT

A

A

B

B



**MATERIALS**

**BUSHING:**  
Stainless Steel (304)

**BASE:**  
Polycarbonate (PC)  
Polybutylene Terephthalate (PBT), UL94 V-2

**ACTUATOR:**  
Stainless Steel (304)  
Polycarbonate (PC)

**HARDWARE:**  
Nickel Plated Brass (H59)

**SEALING:**  
Silicone Rubber

**INNER ASSEMBLY:**  
Polyoxymethylene (POM)  
Phosphor Bronze

**SPRING:**  
Spring Steel

**CONTACTS:**  
Silver/Cadmium Oxide (AgCdO)

**TERMINALS:**  
Silver Plated Brass (H62)  
Silver Plated Phosphor Bronze

**O-RING:**  
Silicone Rubber

**COLORS AND FINISH**

**BEZEL:**  
Stainless Steel  
Machine Finish

**ACTUATOR:**  
Stainless Steel  
Machine Finish

**ILLUMINATION:**  
Red (Forward)  
Red (Reverse)

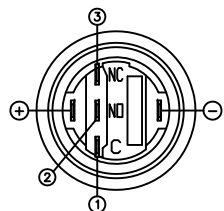
**MARKING:**  
None

C

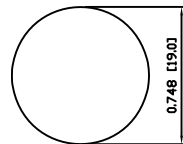
C

D

D



**SUGGESTED PANEL CUTOUT**



MAXIMUM PANEL THICKNESS: 0.433 [11.0mm]

**EXPLODED VIEW**

**ASSEMBLED VIEW**

BODY	A	09/07/24	CAB
COLORS	A	09/07/24	CAB
MATERIALS	B	09/10/16	CAB
SPECIFICATIONS	A	09/07/27	CAB
REFERENCE	REV.	DATE	BY

THE INFORMATION CONTAINED IN THIS DOCUMENT IS PROPRIETARY TO E-SWITCH AND IS NOT TO BE COPIED OR TRANSFERRED

A	INITIAL RELEASE	18770	10/01/13	CAB
REV.	DESCRIPTION	PCR	DATE	DRAWN BY

DIMENSIONS	
INCHES [MILLIMETERS]	
GENERAL TOLERANCES	
±0.008 [±0.2] / ±1'	
SCALE	PROJECTION
DRAWING NOT TO SCALE	1:1

<b>PV4F230SS-314</b>		
DRAWING NUMBER	DATE	REVISION
52-PV4F230SS314	JANUARY 13, 2010	A